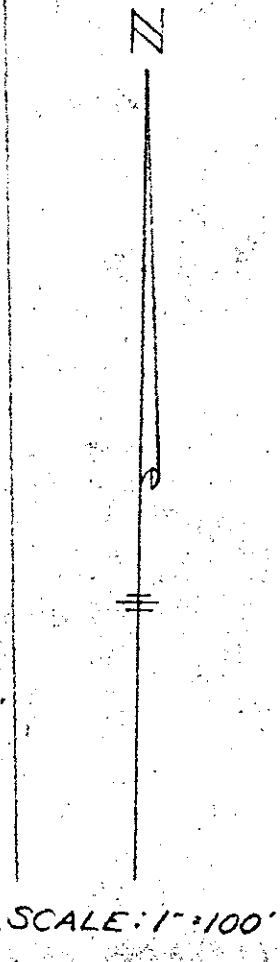
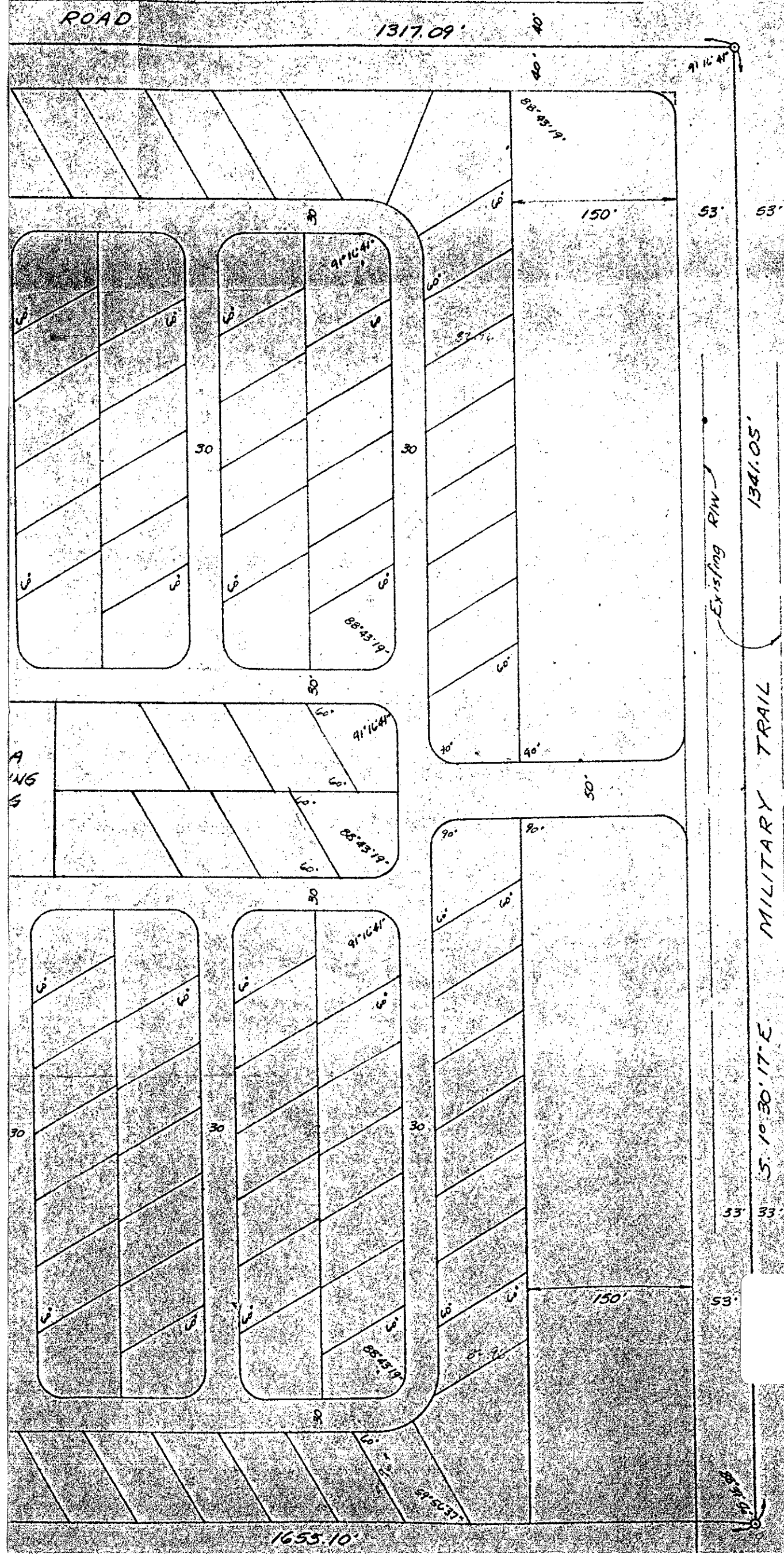


LOCATION MAP  
SECTION 2, TWP. 46S, RGE 42 E.



Existing R/W  
1341.05'  
MILITARY TRAIL  
S. 1° 30' 17" E.

mh0005.igr  
COLONIAL ESTATES PG2

PRELIMINARY PLAN  
SHOWING A  
MOBILE HOME PARK  
in  
SECTION 2, TWP. 46S, RGE. 42 E  
PALM BEACH COUNTY, FLORIDA